

MARKS	MODIFICATION NO.	MODIFICATION CAUSE	PAGE NO.	SIGN	DATE
标记	修改序号	修改原因	页码	签名	日期

# CAPACITY PLAN

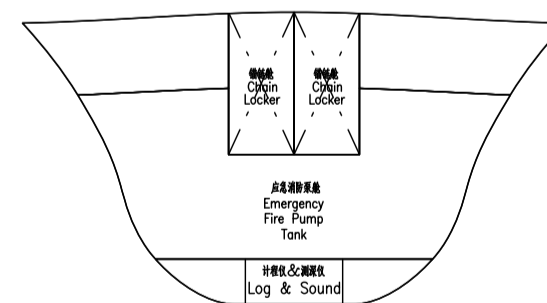
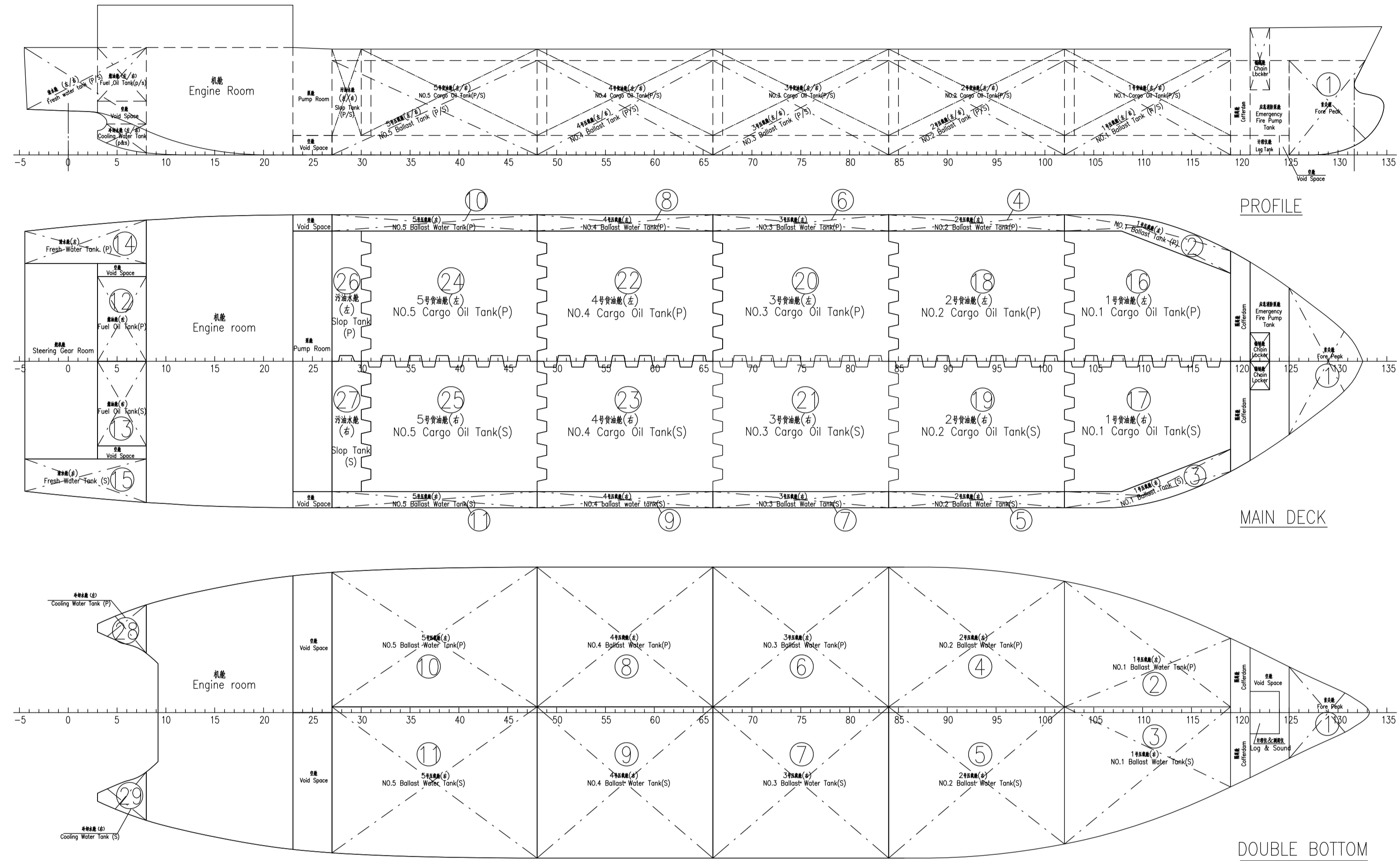
No	Compartments	Code	FR.NO.	Capacity	Weight	LCG	TCG	VCG	Frs.m
序号	舱名	代号	位置	容积	重量	重心横距	重心纵距	重心垂距	自由液面
Water Ballast Tanks 压载水舱 : S.G.=1.025 t/m <sup>3</sup> , Filling Ratio= 100%									
1	FORE PEAK TK-W.B. 前尖舱	RWBFP	125-F.E.	102.9	105.5	76.785	0.000	3.215	101.1
2	NO.1 W.B.TK PS 1号压载舱 (左)	RWB1P	102-119	132.2	135.5	66.083	-5.069	1.977	242.0
3	NO.1 W.B.TK SB 1号压载舱 (右)	RWB1S	102-119	140.6	144.1	66.096	4.767	1.895	324.9
4	NO.2 W.B.TK PS 2号压载舱 (左)	RWB2P	84-102	152.8	156.6	55.836	-5.701	1.532	540.2
5	NO.2 W.B.TK SB 2号压载舱 (右)	RWB2S	84-102	161.7	165.7	55.834	5.388	1.480	687.2
6	NO.3 W.B.TK PS 3号压载舱 (左)	RWB3P	66-84	151.8	155.6	45.000	-5.713	1.455	583.8
7	NO.3 W.B.TK SB 3号压载舱 (右)	RWB3S	66-84	160.7	164.7	45.000	5.397	1.408	738.6
8	NO.4 W.B.TK PS 4号压载舱 (左)	RWB4P	48-66	151.8	155.6	34.200	-5.713	1.455	583.8
9	NO.4 W.B.TK SB 4号压载舱 (右)	RWB4S	48-66	160.7	164.7	34.200	5.397	1.408	738.6
10	NO.5 W.B.TK PS 5号压载舱 (左)	RWB5P	27-48	175.7	180.1	22.526	-5.687	1.464	659.1
11	NO.5 W.B.TK SB 5号压载舱 (右)	RWB5S	27-48	186.1	190.7	22.525	5.370	1.416	835.9
SUBTOTAL 小计				1676.8	1718.7				6035.5

No	Compartments	Code	FR.NO.	Capacity	Weight	LCG	TCG	VCG	Frs.m
序号	舱名	代号	位置	容积	重量	重心横距	重心纵距	重心垂距	自由液面
Diesel Oil Tanks 燃料油舱 : S.G.=0.84 t/m <sup>3</sup> , Filling Ratio= 98%									
12	FUEL OIL TANK PS 燃料油舱 (左)	RF01P	3-8	49.4	41.5	3.300	-2.576	4.917	29.5
13	FUEL OIL TANK SB 燃料油舱 (右)	RF01S	3-8	49.4	41.5	3.300	2.576	4.917	29.5
SUBTOTAL 小计				98.9	83.1				59.1

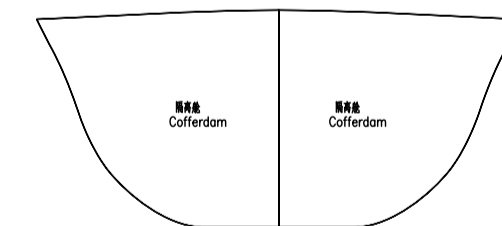
No	Compartments	Code	FR.NO.	Capacity	Weight	LCG	TCG	VCG	Frs.m
序号	舱名	代号	位置	容积	重量	重心横距	重心纵距	重心垂距	自由液面
Fresh Water Tanks 淡水舱 : S.G.=1.0 t/m <sup>3</sup> , Filling Ratio=100%									
14	FRESH WATER TK PS 淡水舱 (左)	RFW1P	A.E.-8	49.5	49.5	1.447	-7.016	4.816	9.9
15	FRESH WATER TK SB 淡水舱 (右)	RFW1S	A.E.-8	49.5	49.5	1.447	7.016	4.816	9.9
SUBTOTAL 小计				99.0	99.0				19.8

No	Compartments	Code	FR.NO.	Capacity	Weight	LCG	TCG	VCG	Frs.m
序号	舱名	代号	位置	容积	重量	重心横距	重心纵距	重心垂距	自由液面
Cargo Oil Tank 货油舱 : Filling Ratio=98%									
16	NO.1 CARGO OIL TK PS 1号货油舱 (左)	RCAL1P	102-119	299.2		66.035	-3.171	3.802	333.7
17	NO.1 CARGO OIL TK SB 1号货油舱 (右)	RCAL1S	102-119	296.6		66.034	3.199	3.803	326.7
18	NO.2 CARGO OIL TK PS 2号货油舱 (左)	RCAL2P	84-103	403.5		55.999	-3.863	3.676	465.7
19	NO.2 CARGO OIL TK SB 2号货油舱 (右)	RCAL2S	84-103	403.5		56.031	3.863	3.676	465.7
20	NO.3 CARGO OIL TK PS 3号货油舱 (左)	RCAL3P	66-85	410.8		45.261	-3.929	3.656	465.7
21	NO.3 CARGO OIL TK SB 3号货油舱 (右)	RCAL3S	66-85	410.8		45.293	3.929	3.656	465.7
22	NO.4 CARGO OIL TK PS 4号货油舱 (左)	RCAL4P	48-67	410.8		34.461	-3.929	3.656	465.7
23	NO.4 CARGO OIL TK SB 4号货油舱 (右)	RCAL4S	48-67	410.8		34.493	3.929	3.656	465.7
24	NO.5 CARGO OIL TK PS 5号货油舱 (左)	RCAL5P	30-49	410.8		23.662	-3.929	3.657	465.7
25	NO.5 CARGO OIL TK SB 5号货油舱 (右)	RCAL5S	30-49	410.8		23.694	3.929	3.657	465.7
26	SLOP TK PS 污油水舱 (左)	RCAL6P	27-31	76.9		17.263	-3.985	3.661	81.8
27	SLOP TK SB 污油水舱 (右)	RCAL6S	27-31	79.9		17.257	3.836	3.663	91.6
SUBTOTAL 小计				4024.4					4559.0

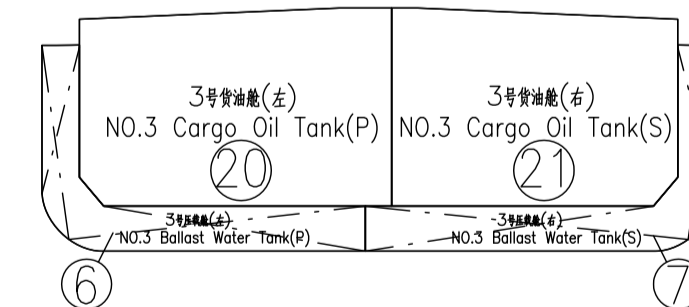
No	Compartments	Code	FR.NO.	Capacity	Weight	LCG	TCG	VCG	Frs.m
序号	舱名	代号	位置	容积	重量	重心横距	重心纵距	重心垂距	自由液面
Miscellaneous Tanks 杂项舱 : S.G.=1.025 t/m <sup>3</sup> , Filling Ratio=100%									
28	COOLING WATER TK PS 冷却水舱 (左)	RSLU1P	A.E.-8	7.2	7.4	3.803	-5.154	1.196	4.7
29	COOLING WATER TK SB 冷却水舱 (右)	RSLU1S	A.E.-8	7.2	7.4	3.803	5.154	1.196	4.7
SUBTOTAL 小计				14.4	14.8				9.4



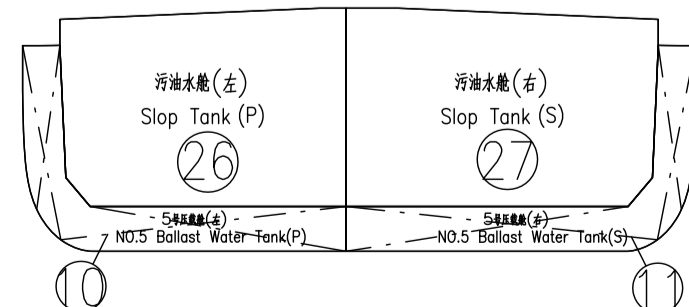
Fr.122



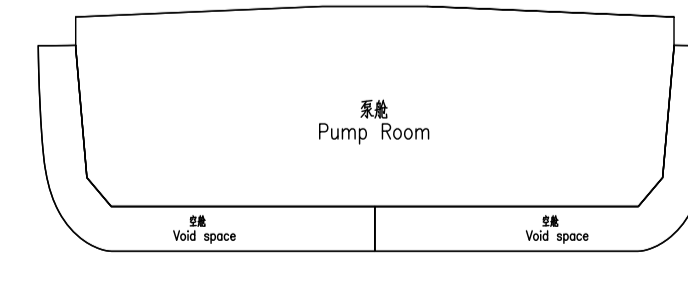
Fr.120



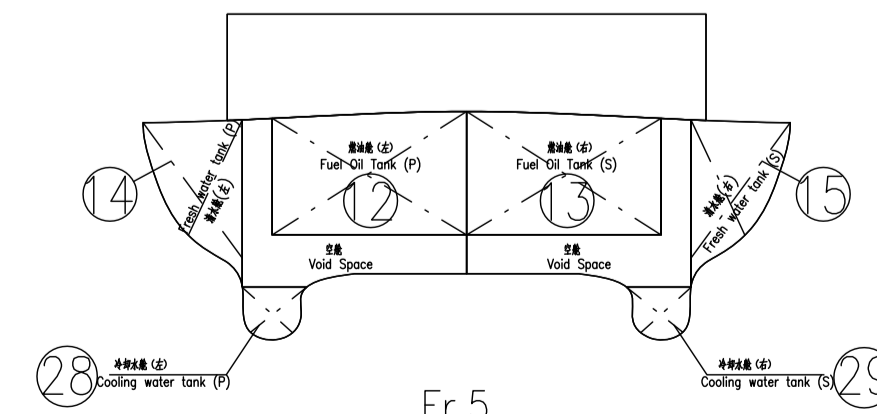
Fr.70



Fr.28



Fr.25



Fr.5

## PRINCIPAL PARTICULARS 主要参数

LENGTH O.A.	总长	83.90 m
LENGTH B.P.	垂线间长	79.00 m
BREADTH	型宽	18.00 m
DEPTH	型深	5.50 m
DRAFT	吃水	4.30 m
FRAME SPACE	肋距	0.60m
CAMBER	梁拱	0.30m

DESIGNED		DATE	3500DWT PRODUCT OIL TANK	REV. NO.	WEIGHT	SCALE
CHECKED		DATE	3500吨 成品油舱	0	Kg	1:200
VERIFIED		DATE		第 1 / 1 页		
APPROVED		DATE	CAPACITY PLAN	设计阶段	DETAIL DESIGN	
SHIPYARD			舱容图	PRODUCTION DESIGN		
NanTong Best Marine Engineering CO.,LTD 南通贝斯特船舶与海洋工程设计有限公司			船号(HULL NO.): JSHT005/6		船号(DWG.NO.): JSHT005-103-02	
Master: 船长			Master Tel: 船舶大副		Master: 大副	

This drawing and the information contained is the exclusive property of BEST MARINE and must not be copied or handed over to third parties without our written permission.